

Built as shown in the schematic the Trigger, Delay, Square and /2 outputs will all be approx. 11volts with a +/-12v supply.

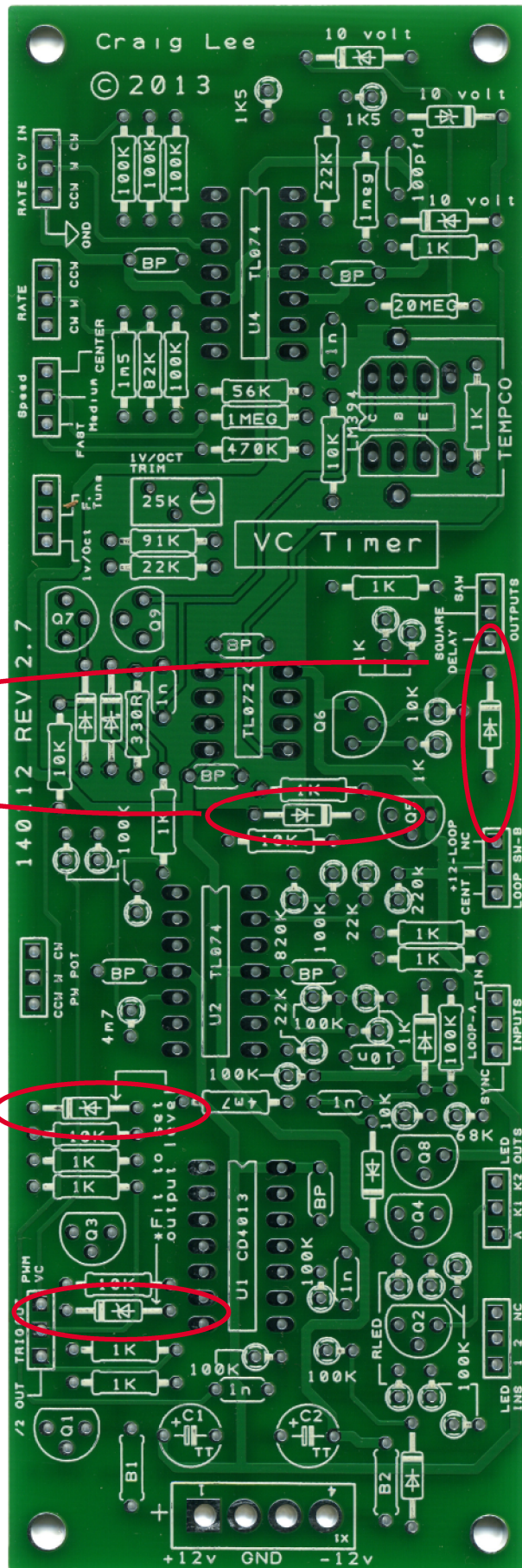
To set the outputs to 5v fit 5.6v zener diodes in the places shown here.

Also replace the diodes marked here with 5.6v zener diodes

Replace these diodes with Zeners for Delay and Square OUT

Fit Zeners here for Trigger and /2 OUT

Zeners should be left out for maximum output voltage



## CLee Timer - Setting the output level